



# LAND BASED THREATS ON KIMBE BAY'S MPA NETWORK

*PRESENTER: PAUL LOKANI*



**USAID**  
FROM THE AMERICAN PEOPLE



Protecting nature. Preserving life.

## Where is the project Working?

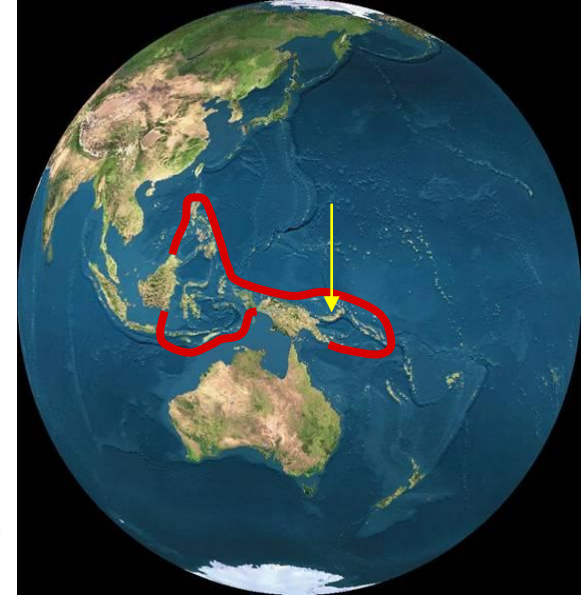
- Kimbe Bay, Papua New Guinea

## Partner

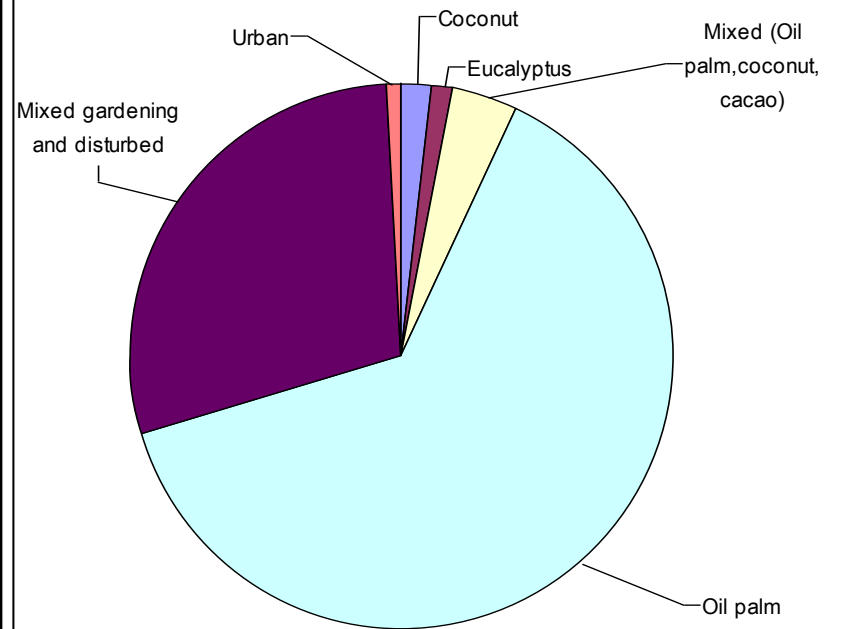
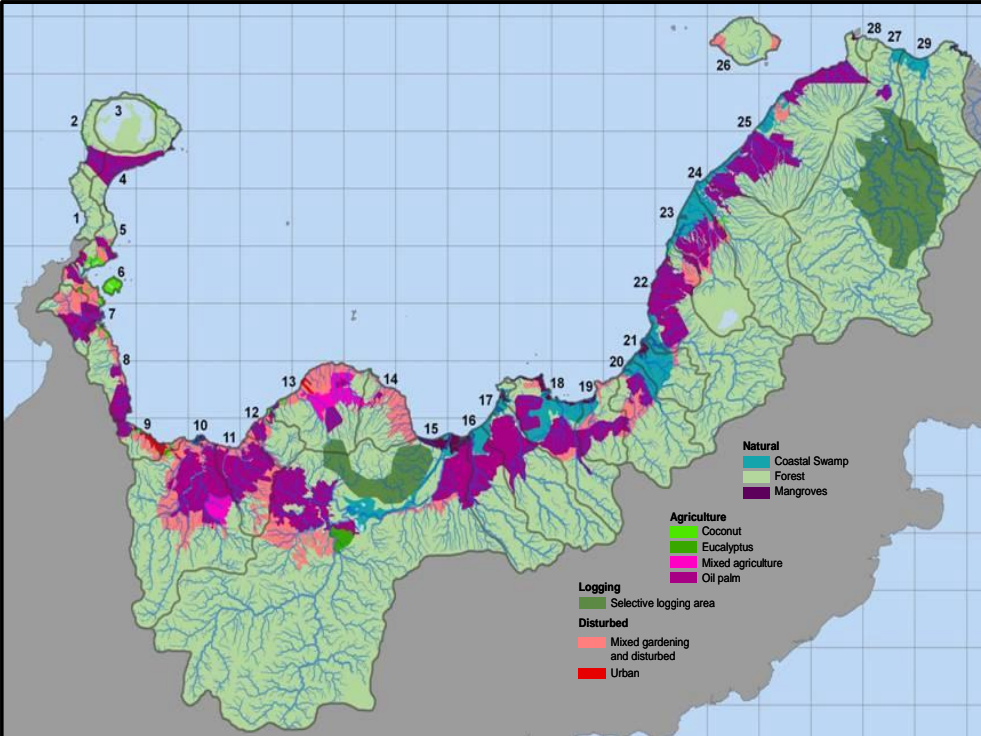
- Private Sector (New Britain Palm Oil)

### *Objective:*

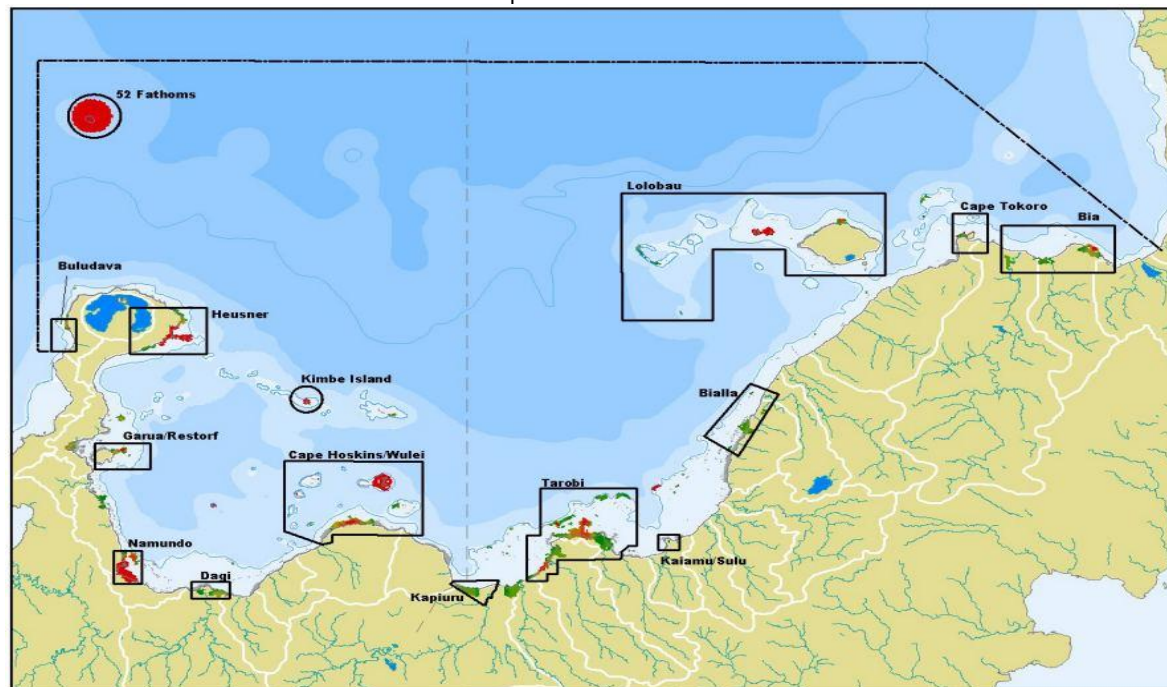
*A large-scale, resilient network of MPA is designed for Kimbe Bay and; at least 20% of high priority areas are effectively protected, with an additional 30% in the process of being*



©TNC



# RESULTS



## **Lessons Learned**

- Partner and Involve with private Sector to offer solution.
- Formalise relation through MOU or LOA

## **Future Challenges**

- Expand and involve other Private Partners
- Involve Village/Community Land Users
- Address Village Oil Palm and Garden Land Use